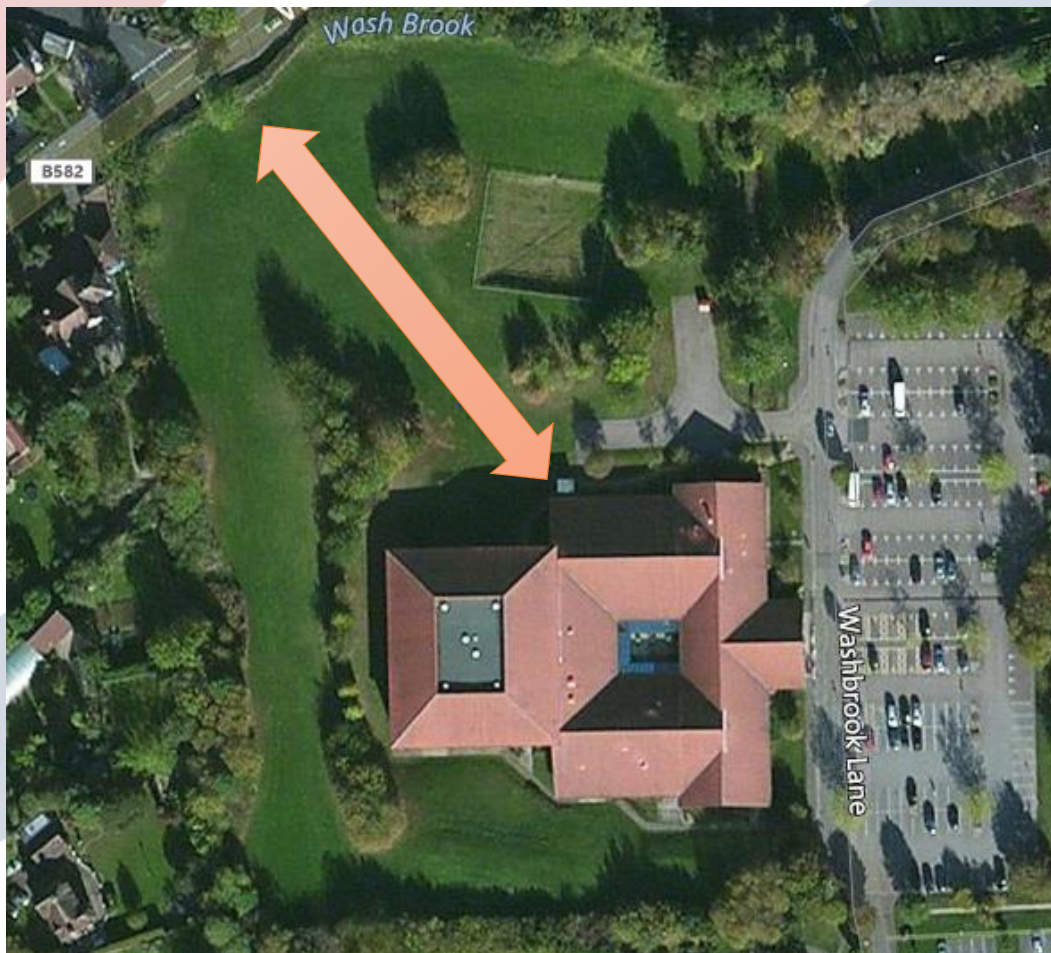


Car Park & Footpath Project

- **Proposal:**
 - **Council funded project managed by SLM**
 - **Expand current car park provision to meet current over-subscribed demand**
 - **Future proof parking provision for Brocks Hill, Country Park & Parklands LC combined**
 - **Provide footpath from Wigston Rd to Leisure Centre**
- **Tendring Drive footpath**

Proposed Site



everyone
ACTIVE

Feel better for it

Design



Summary

Design

- ✓ 150 spaces
- ✓ Footpath leading from Wigston Road to Parklands LC
- ✓ Designed in the style of an 'overflow' car park using materials sympathetic to the surrounding environment (e.g.)
- ✓ Retain all existing trees
- ✓ Extra trees to be planted in strategic positions

Cost

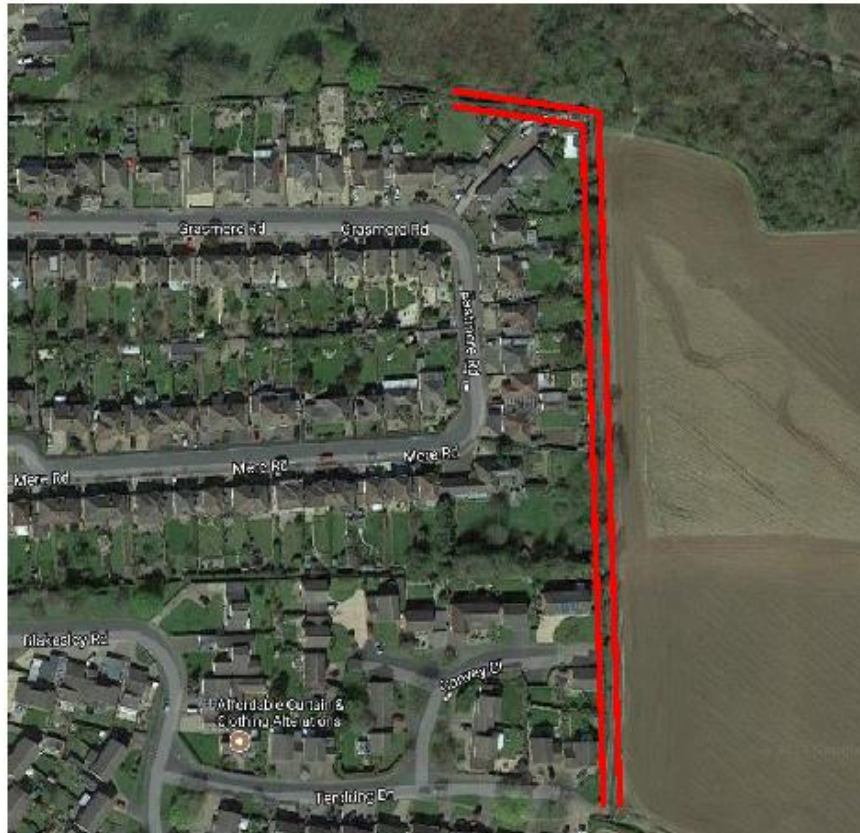
- ✓ Cost are currently being finalised but are circa £300k.

Timeline

- ✓ Dependant on planning permission.

Tending Drive footpath

Tending Drive path:



Tendring Drive footpath



Key: Black line = tarmac path
Red dot = original proposed entrance
Green dot = new proposed entrance

everyone
ACTIVE

Feel better for it

Tendring Drive footpath

Current condition of the Tendring Road path



Tending Drive footpath

